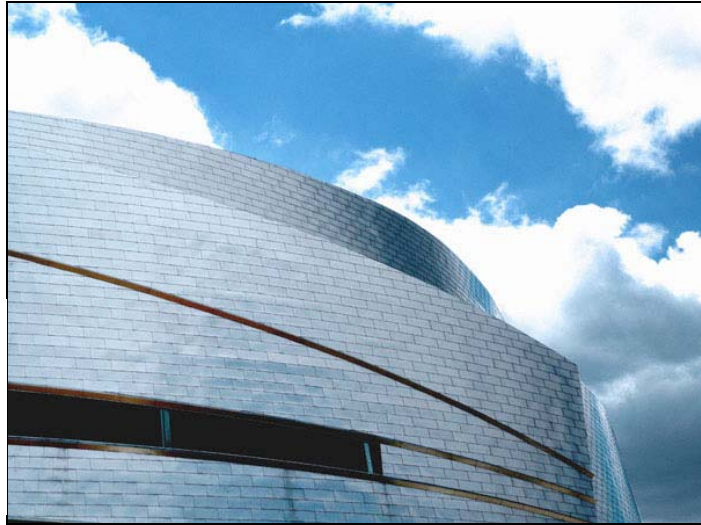




## Tulsa

### A New Kind of Energy



## Downtown Tulsa's Project Highlights:

- **BOK Center - \$180,000,000**
  - \* Seating capacity 18,000+
  - \* Projected visitors 750,000 annually
  - \* Opening September 2008
- **Convention Center**
  - \* Ballroom addition, 30,000 square feet
  - \* Glass wall overlooking BOK Center
  - \* Ten new meeting rooms, total 35
- **Vision 2025 Housing**
  - \* First Street Lofts, 18 loft units, **\$3 million** investment
  - \* Mayo Hotel & Lofts, 100 hotel rooms, 70 loft units, **\$38 million** investment
  - \* Mayo Building, 60 residential units, **\$32 million** investment
- **Oklahoma Jazz Hall of Fame**
  - \* Historic landmark building, Tulsa's Union Depot
  - \* Performance hall, recording studio,
  - \* Public/private investment more than **\$4 million**
- **Visual Arts Center – Brady Village**
  - \* Adaptive reuse of former warehouse to exhibit, studio, and performance space
  - \* Local non-profit corporations developing with investment of **\$40 million**
  - \* Adjacent public park created on a full block at a cost of **\$5 million**
- **Griffin Communications Media Center**
  - \* 50,000 sf state-of-the-art facility housing CBS affiliate KOTV, Channel 6
  - \* New construction, Brady Village Arts & Entertainment District
  - \* Private investment more than **\$25 million**
- **H.A. Chapman Centennial Green**
  - \* Public park at 6<sup>th</sup> Street, Boston to Main
  - \* Oval green, amphitheater, gusher fountain
  - \* Public/private investment more than **\$3 million**
- **John Hope Franklin Greenwood Reconciliation Memorial**
  - \* Encompassing the subject of race relations in the United States
  - \* Design consultation with National Park Service
  - \* Public/private investment more than **\$3 million** in Brady Village Arts District
- **Marriott Courtyard Atlas Life**
  - \* Boston Avenue, 12-story historic building
  - \* Conversion/adaptive reuse project to 120-room hotel property
  - \* Private investment more than **\$7 million**